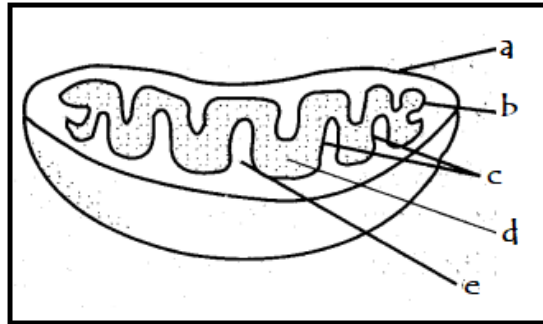


MINISTRY OF EDUCATION, HERITAGE AND ARTS
YEAR 12 BIOLOGY
REVISION WORKSHEET 3

Write the answers to the following questions in your exercise/activity books.

Respiration

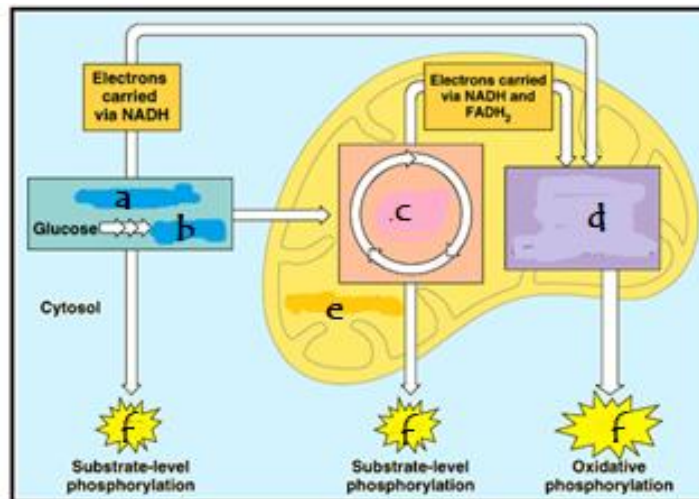
1. Study the diagram given below of a mitochondrion where the process of respiration takes place, and answer the following question. **(10 marks)**



Source: <https://ask.learnbse.in/>

For each of the parts a to e, write the name and function.

2. In about 120 words:
- define respiration and briefly describe how parts of the mitochondria are adapted to ensuring efficiency in this process. **(8 marks)**
 - describe **two differences** between anaerobic and aerobic respiration. **(8 marks)**
3. The diagram given below shows the process of respiration. Use it to answer the questions that follow.



Source: <https://www.quora.com/>

- Match the following labels to the letters in the diagram: mitochondria, pyruvate, Krebs cycle, ATP, electron transport chain, glycolysis. **(3 marks)**
- Briefly outline the processes in the **Glycolysis**, including where it happens and the products of the reaction. **(3 marks)**
- Briefly outline the processes in the **Krebs Cycle**, including where it happens and the products of the reaction. **(3 marks)**
- Write the overall respiration equation. **(1 mark)**

The End